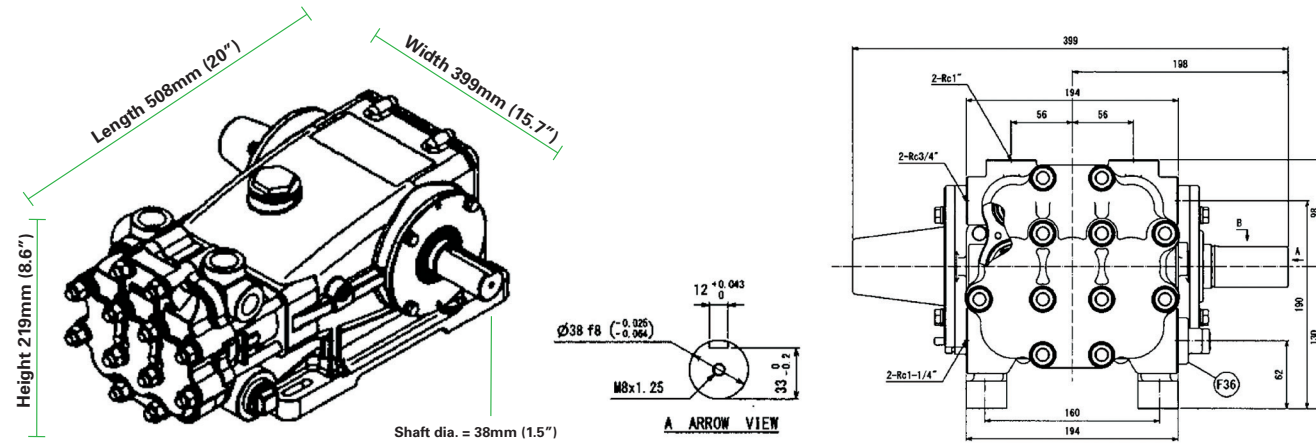


# ARIMITSU

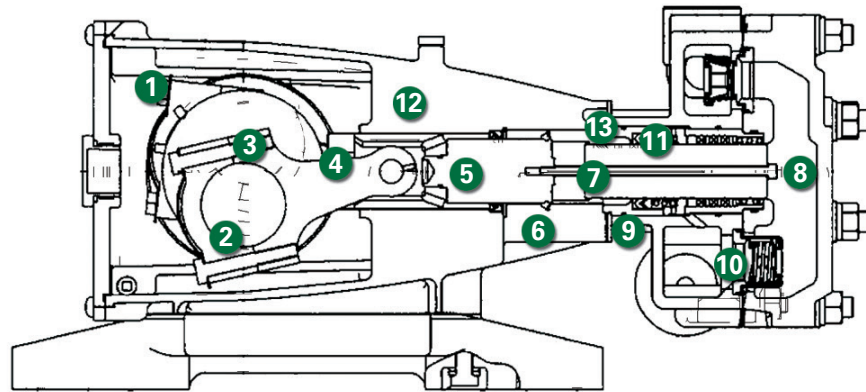
## PROVEN PLUNGER PUMPS

### DIMENSIONS (mm/in.)



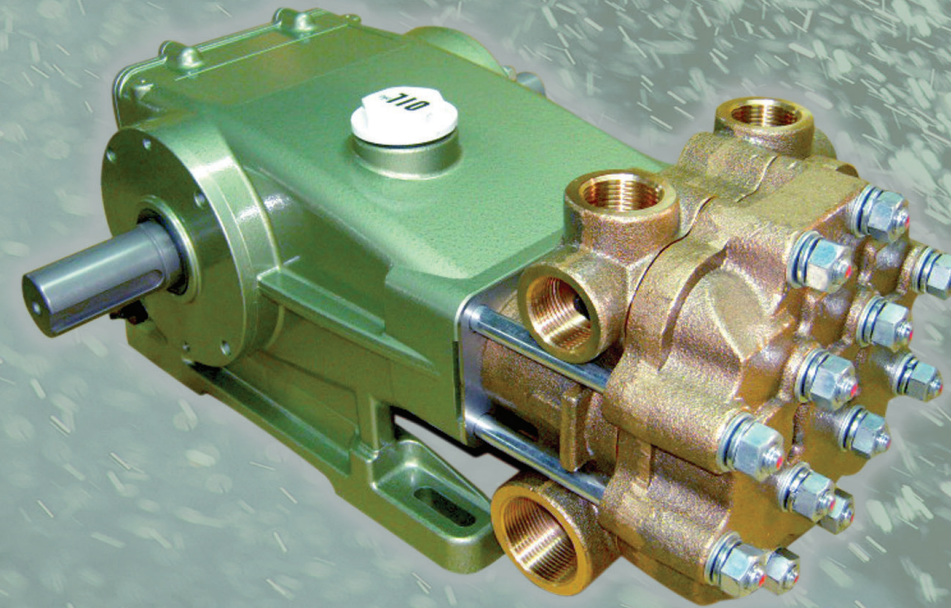
### CUTAWAY

- High strength, lightweight die cast crankcase
- Oversized crankshaft bearings for long life and quiet operation
- Crankshaft is machined for low friction, quiet operation and high efficiency
- High strength connecting rods are tolerance matched for extended life and low friction operation
- High polish stainless steel plunger rods for smooth operation and even wear
- Zero clearance, polymer exclusion will not corrode
- Proprietary blend, solid ceramic plungers for long wear and increased thermal shock resistance
- Forged brass manifolds for strength and corrosion resistance, machined to optimize fluid flow and performance while extending useful life
- Liquid-cooled, low drag seals provide long life, extended run-dry ability and increased suction lift
- 100% stainless steel valve construction provides superior protection against chemical and temperature damage
- Industrial, continuous-duty seal design for superior life and expanded fluid handling abilities
- Balanced flow crankcase ensures lubrication and quiet operation
- Slide-in seal cases mean no special tools are required, making seal replacement easy



# ARIMITSU

## PROVEN PLUNGER PUMPS



# 11 Series

## TR-1110KV

### FEATURES

- Triplex pumps provide smooth liquid flow
- Liquid cooled, low drag seals provide long life, improved suction, higher efficiency and longer dry running without damage
- Balanced flow crankcase design and precision machining ensures uniform lubrication and quiet operation
- Manifold is designed and machined to guarantee superior fluid flow
- Zero-clearance exclusionary seals protect crankcase

### QUALITY

- 100% stainless steel valve assemblies deliver greater temperature and chemical handling abilities
- Precision ground ceramic plungers utilize a proprietary material blend for long life and increased thermal shock resistance
- Forged brass manifolds offer strength and corrosion resistance
- Proprietary, proven seal blend maximizes life and increases maintenance intervals
- Oversized crankshaft bearings for long life and quiet operation

### MAINTENANCE

- No special tools required for repair or maintenance
- Fluid end is easily serviced without entering crankcase
- Seals require no adjustment

### SPECIFICATIONS

Model TR-1110KV	US	METRIC
Flow	23 gpm	87 lpm
Pressure	1000 psi	70 bar
RPM	950	950
Inlet Pressure	Flooded to 70 psi	Flooded to 5 bar
Alternative specification		
Flow	16 gpm	60 lpm
Pressure	1500 psi	105 bar
RPM	650	650
Inlet Pressure	-5 to 70 psi	0-5 bar
Inlet	1-1/4" MNPT	1-1/4" MNPT
Outlet	1" & 3/4"	1" & 3/4"
Oil requirement	60 oz.	1.8 L
Shaft Dia.	1.5"	38 mm
Max Liquid Temp.	175°F	80°C
Shaft Location	both sides	both sides
Weight	86 lbs.	39 kg

Determining Pump RPM	Rated GPM	=	"Desired" GPM
	Rated RPM	=	"Desired" RPM
Determining Required HP	GPM x PSI	=	Electric Brake H.P. Required
	1460	=	
Determining Motor Pulley Size	Motor Pulley OD	=	Pump Pulley OD
	Pump RPM	=	Motor RPM

# ARIMITSU

Arimitsu of North America, Inc.  
700 McKinley St. NW  
Anoka, MN 55303  
ph: 763.433.0303  
fax: 763.433.0404  
www.arimitsupumps.com

Manufactured by Arimitsu Industry Co., Ltd., of Osaka, Japan, a leading supplier of Industrial plunger pumps and systems used by Industrial leaders throughout the World.



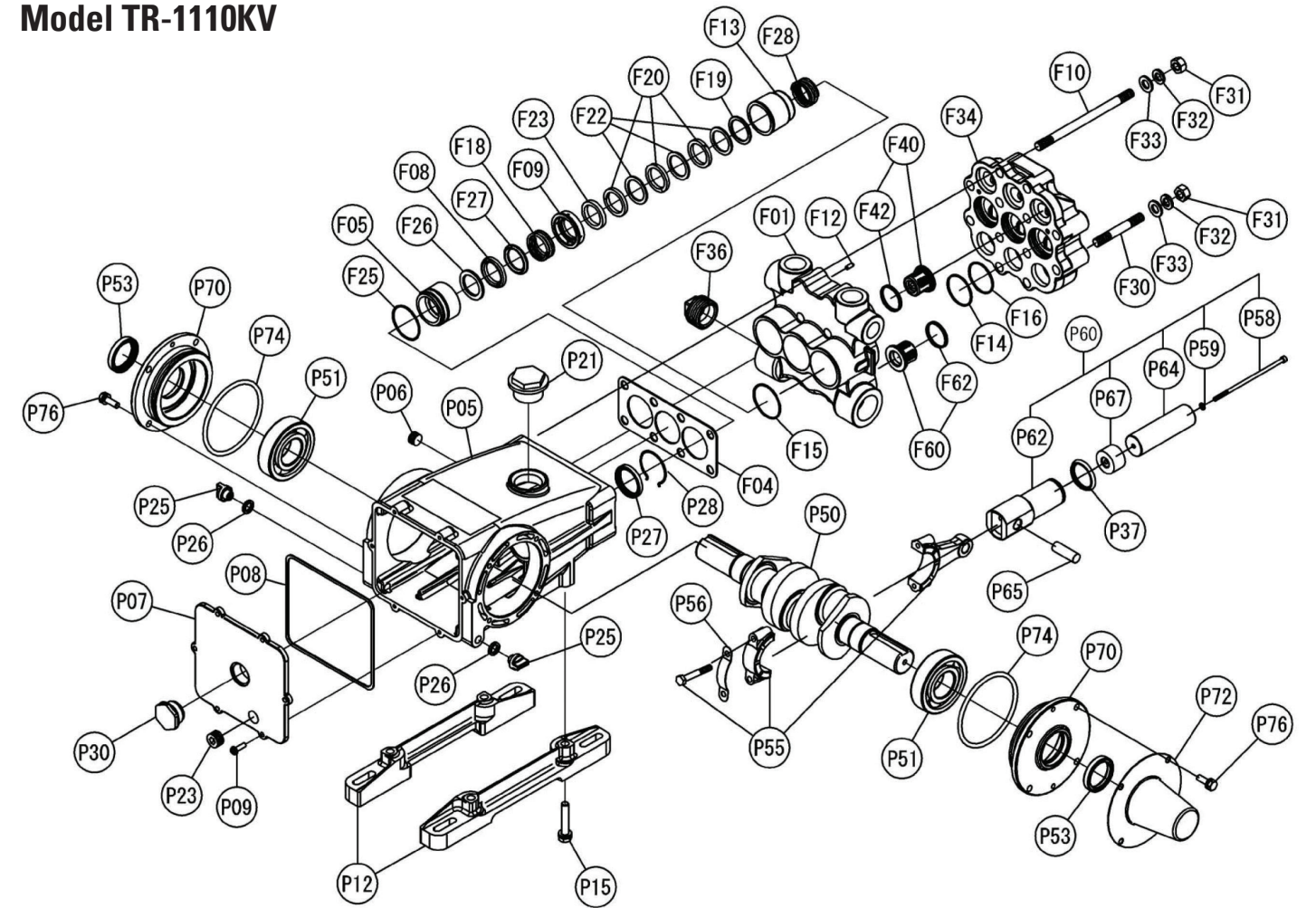
Rev.1, Model TR-1110KV, (5-12)  
Part #. 139

## Parts List

REF. #	PART NUMBER	PART NAME	MATERIAL	QTY
F01	044C001010	INLET MANIFOLD	BRASS	1
F04	044A001250	CRANKCASE SPACER	SUS (STAINLESS)	1
F05	044C001200	PACKING GLAND	BRASS	3
F08	04432014KO	LOW PRESSURE VACUUM SEAL	NBR	3
F09	044C001260	SPRING ADAPTER	COPPER	3
F10	0440001100	STUD BOLT	PLATED STEEL	8
F12	0361001110	DOWEL PIN	PLATED STEEL	2
F13	044C001300	STUFFING BOX	STAINLESS	3
F14	044C003205	BACKUP RING, DISCHARGE MFLD	TEFLON	3
F15	9203B15050	O-RING, STUFFING BOX	NBR	3
F16	9203F15045	O-RING, DISCHARGE MANIFOLD	NBR	3
F18	044C001460	VACUUM SEAL SPRING	STAINLESS STEEL	3
F19	044C001440	MALE PACKING ADAPTER	COPPER	3
F20	04430014Y0	HIGH PRESSURE PACKING	FLOUROPOLYMER FIBER	9
F22	0633671272	PACKING ADAPTER	CARBON TEFLON	9
F23	0560001271	FEMALE PACKING ADAPTER	CARBON TEFLON	3
F25	9203B15048	O-RING, PACKING GLAND	NBR	3
F26	044C001280	FEMALE ADAPTER, VAC.SEAL	TEFLON	3
F27	0370001430	MALE ADAPTER, VACUUM SEAL	COPPER	3
F28	044C001450	PACKING SPRING	STAINLESS STEEL	3
F30	0440001140	STUD BOLT	PLATED STEEL	4
F31	9140B12000	HEX NUT	PLATED STEEL	12
F32	9163F12000	SPLIT LOCK WASHER	PLATED STEEL	12
F33	9160B12000	FLAT WASHER	PLATED STEEL	12
F34	044C003200	DISCHARGE MANIFOLD	BRASS	1
F36	9306A32000	PLUG, 1-1/4"	FCMB	1
F40	044C003300	DISCHARGE VALVE ASSEMBLY	STAINLESS STEEL	3
F42	0443003340	VALVE SEAT SEAL	NBR	3
F60	044C003800	INLET VALVE ASSEMBLY	STAINLESS STEEL	3
F62	0443003340	VALVE SEAT SEAL	NBR	3
P05	044A002010	CRANKCASE	ALUMINUM	1
P06	9313A11000	PLUG	STEEL	1
P07	044A002040	CRANKCASE COVER	ALUMINUM	1
P08	0440002050	CRANKCASE COVER GASKET	NBR	1
P09	9130B06020	REAR COVER SCREW	PLATED STEEL	6
P12	0400002200	MOUNTING FEET	ALUMINUM	2
P15	9106B10055	BOLT, MOUNTING FEET	STEEL	4
P21	0589112300	OIL CAP	FLOUROPOLYMER	1
P23	9313A11500	COVER PLUG	S25C	1
P25	0090002320	OIL DRAIN PLUG	FLOUROPOLYMER	2
P26	0090002340	DRAIN PLG GASKET	NBR	2
P27	0440002400	OIL SEAL	NBR	3
P28	0440002420	OIL SEAL RETAINER	STAINLESS STEEL	3
P30	0440002600	OIL SIGHT GAUGE	FLOUROPOLYMER	1
P37	0440001730	SLINGER	NBR	3
P50	0440004010	CRANKSHAFT	STEEL	1
P51	0440004020	BEARING	STEEL	2
P53	0400004030	OIL SEAL, CRANKSHAFT	NBR	2
P55	0440004600	CONNECTING ROD ASSEMBLY	ALUMINUM	3
P56	0400004630	RETAINING PLATE	STEEL	3
P58	9120R05135	PLUNGER RETAINER	STAINLESS STEEL	3
P59	0121114852	RETAINER GASKET	COPPER	3
P60	044C0047S0	PLUNGER ASSEMBLY	-	3
P62	0440004860	PLUNGER ROD	STAINLESS STEEL	3
P64	044C0048S0	PLUNGER	CERAMIC	3
P65	04000049001	PLUNGER PIN	STEEL	3
P67	044C004830	PLUNGER ADAPTER JOINT	COPPER	3
P70	044A004400	BEARING CASE	ALUMINUM	2
P72	0400004430	SHAFT COVER	PLATED STEEL	1
P74	9201B50105	O-RING, BEARING CASE	NBR	2
P76	9106B08025	BOLT, BEARING CASE	STEEL	8

## Exploded View

Model TR-1110KV



REF. #	PART NUMBER	PART NAME	MATERIAL	QTY
	30147	SEAL KIT (F08, F09, F15, F18, F19, F20, F22, F23, F25, F26, F27, F28)	FP/FPF	1
	30148	VALVE KIT, INLET (F60, F62)	STAINLESS	1
	30149	VALVE KIT, OUTLET (F40, F42)	STAINLESS	1

### Horsepower Requirements

### Pressure (psi)

TR-1110KV	RPM			Pressure (psi)				
	GPM	LPM		900	1000	1100	1200	1500
	650	16.0	62.7	9.6	10.7	11.7	12.8	16.0
	800	19.5	77.2	11.7	13.0	14.3	15.6	
	950	23.0	91.7	13.8	15.3			

\* Material listed may be a proprietary version. Parts names without part numbers are only available within complete assemblies.

\* Material codes: FP=Flouropolymer, NBR=Medium Nitrile (Buna-N), FPF=Flouropolymer Fiber STAINLESS=Stainless Steel (300 Series)